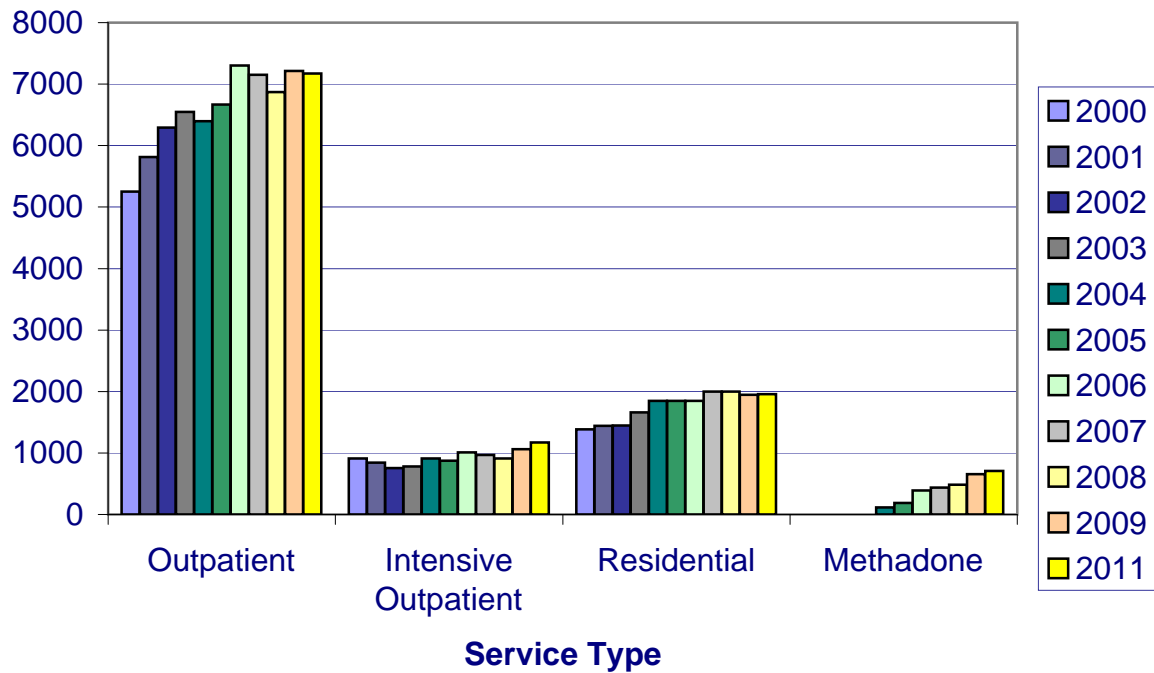


People Treated by Level of Care Received and Fiscal Year

Note: A person may receive more than one level of care within the fiscal year

Number of People Receiving Services by Type of Service and State FY



State Fiscal Year	Total Clients	Outpatient	Intensive Outpatient	Residential	Methadone	Case Management	Halfway
2000	6531	5250	912	1387	0	227	110
2001	7235	5812	841	1440	0	357	113
2002	7609	6295	756	1446	0	536	119
2003	8116	6550	782	1659	0	1511	119
2004	8147	6396	910	1846	113	1798	132
2005	8389	6670	872	1846	185	2019	134
2006	9085	7305	1011	1850	389	1814	124
2007	9215	7154	970	2001	438	1656	146
2008	8883	6872	909	2000	485	1931	200
2009	9118	7215	1060	1949	654	2067	193
2011	9099	7173	1171	1958	710	1804	118

Data Source: Vermont Substance Abuse Treatment Information System (SATIS)
This reflects only people receiving treatment at state-funded treatment facilities.